



The Bilge Pump

The Official Log of the Northwest R/C Ship Modelers
www.shipmodelers.com

May 2021

Look Ahead Events

JUNE

- 3 Meeting by Zoom 7 pm
- 5 Fun Float – Bellevue Pond 9 am

JULY

- 1 Meeting by Zoom 7 pm
- 10 Fun Float – Bellevue Pond 9 am
- 17 NWRCSM Annual Model Boat Regatta – Bellevue 9 am to 4 pm
- 31 Night Float (awaiting approval) 7-10 pm

AUGUST

- 5 Meeting by Zoom 7 pm
- 14 Fun Float – Bellevue Pond 9 am
- 21 Tug Boat Regatta 9 am to 4 pm

More events information and updates on calendar page later in newsletter and, **Check our website for latest updates at www.shipmodelers.com**



Read more about members' projects.

From the Wheelhouse

Robert Osmond

It was great to be back running our boats at the Bellevue Pond again.

Dave Green through his tireless efforts has now secured all of our fun floats through September (the last month before they drain the pond), as well as getting our NWRCSM's Regatta permit for July 17th and the Tug Regatta for August 21 approved.

As of this writing the only two outstanding permits are for our Night Floats (only for boats with lights), will be July 31 and Sept. 18. Times are July 31, 7 pm to 10 pm for 8:45 pm sunset and Sept 18, 6 pm to 8:30 pm for 7:14 pm sunset.

Meetings: No news yet when we can go back to Edmonds Community College Makers space.

Coffees: No news on when we can go back to the Mont Lake Terrace Community center to enjoy coffee and talking.

However with more people getting their shots we are closing in on these activities again.

Time to get your boats ready to run again, our season has begun.

Robert

Meeting Minutes – May 6, 2021

By “Doc” Ron Bray



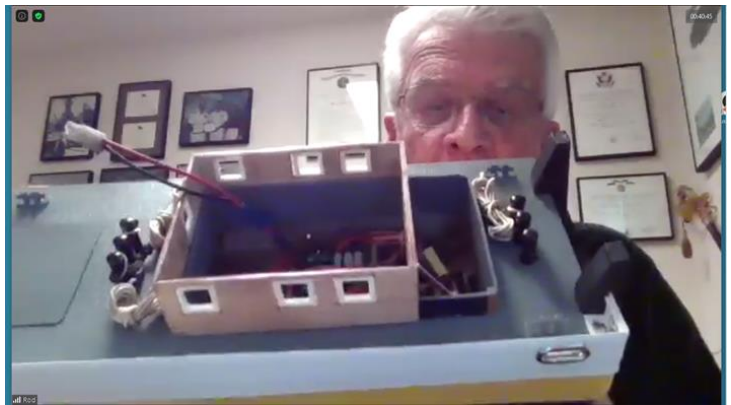
Sixteen swabbies attended the zoom meeting under the baton of our commodore, **Robert Osmond**. There were no guests or new members. It was decided to be an unmuted meeting which seemed to work out quite well.



Show and tell started off with **Rich Goodrich** commenting on his foam sailboat build. He used water-based hobby filler he purchased from Hobby Town. I think it was called Uroglaze. He also used a water-based urethane paint on the hull after several unsuccessful attempts with other brands of paint. He commented further on his Spektrum DX8 with four proportional channels and four on-off channels.



Steve Sunich brought us up to speed on his trawler build. He is using 1/8 x 1/16 inch cedar strips for his decking, spacing the planks with plastic which is then removed, after the glue dries, and regular boat caulking applied. The drawback using the caulking material is that it takes several days to cure. However, the outcome is very realistic.

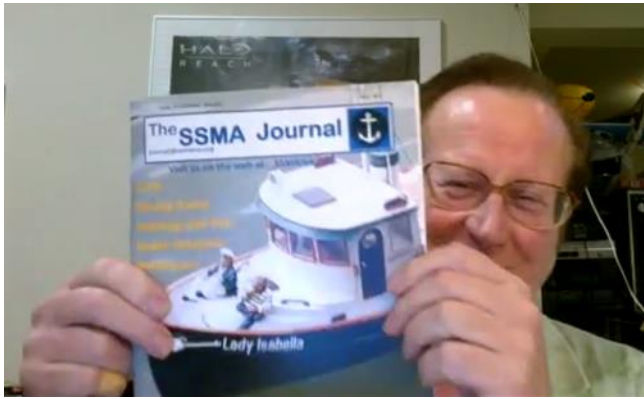


Rob Bindon has made a deck for his Springer out of plastic which he purchased from Tap plastics. This has a non- skid finish appearance.



Robert Osmond showed a nibbler which he is using to cut out square windows on his Atlantic which he is converting to a Pacific vessel. An additional nipper with a smaller bite was also shown.

Under new business, it was emphasized that we should follow the guidelines and protocol established by the CDC and required by the Bellevue park department for gatherings at the pond. Our first outing will be a fun float this Saturday at 0900 hours. Our regatta is scheduled for July 17th and the Tug regatta for the third Saturday of August, the 21st. Hobby Expo is scheduled to be held at the Evergreen fairgrounds on October 30-31 this year. There have been no plans so far for the Tualatin event.



Robert mentioned two articles from our club in the SSMA's Journal, one from **Keith Schermerhorn** and the other from Mel **Suelzle**. However, **Mel** denies he is the author of this article. Can there really be two Suelzles?

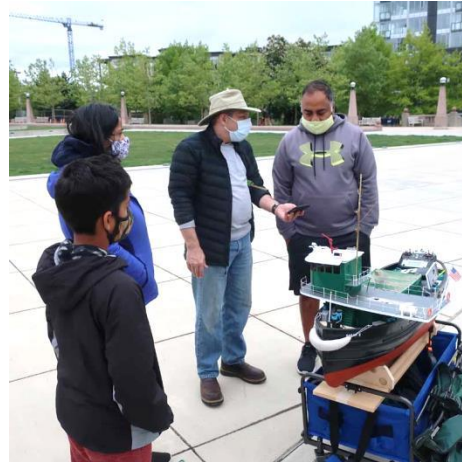
Members were encouraged to join SSMA (Scale Ship Modeler's Association of North America) as there is a wealth of information from clubs around the nation. Another reason to support them is that they are our source for Insurance which would cost a great deal more anywhere else. Please Join the SSMA. (Visit them at <https://www.ssmna.org/index.html>)

The meeting adjourned at 2010 hours.



Fun Float -- May 8

By Robert Osmond



We had a truly memorable **First Fun Float** of 2021. There were 24 members present and two potential new members. There were probably more boats on the water at the same time than we have ever had before (a lot of pent up desire to run boats).



There were several newly built boats. **Kevin Nolet** had his new large green tug Sarah E, very nice and his first plank on frame boat, it ran very well and was impressive on the water.



Steve O'Connell and his friend Dan had their recently built Robbe semi kit twin screw blue and white tug boats which ran very well and were pushing Haslan Winslow's large red bulk freighter around the docking area.



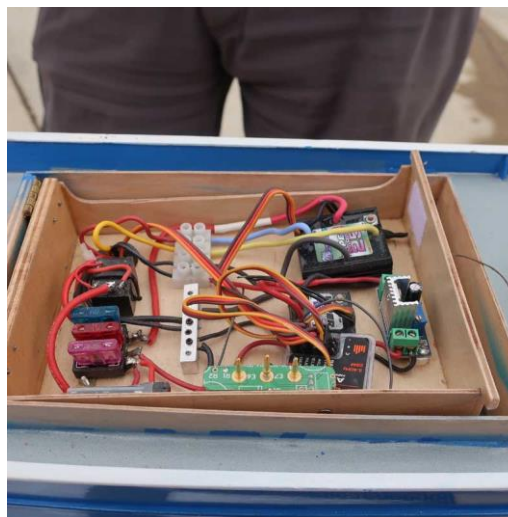
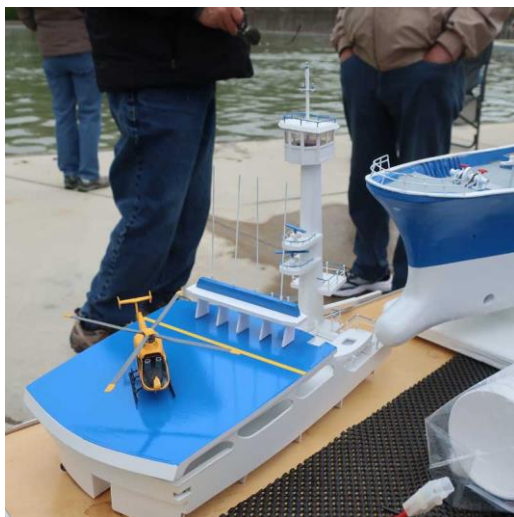
Tom Edwards had his reworked and restored Chris Craft Cruiser Isabelle (named after his granddaughter) on the pond for the first time.



Dave Green had FOUR new boats (staying home and not hanging around pool halls paid off). The four new boats were, a Coast Guard 95' Patrol Boat #95314, a turn of the century tug the George W Washburn, and an excursion boat The City of Jamestown, all very nicely made, and up to his high standards. Dave Green's friend **Garth Chausse** had his new Japanese Kamome Steam Yacht which was very nicely made, it is only his second model boat. Garth is planning on joining our club.



Mel Suelzle was running his new blue and white "un named" tuna boat, with a small helicopter which he spent a great deal of time modifying, changing its size. The boat ran very well and looks very striking on the water.





If there were any other new boats, I apologize for their omission from this article and would be glad to mention them next month.



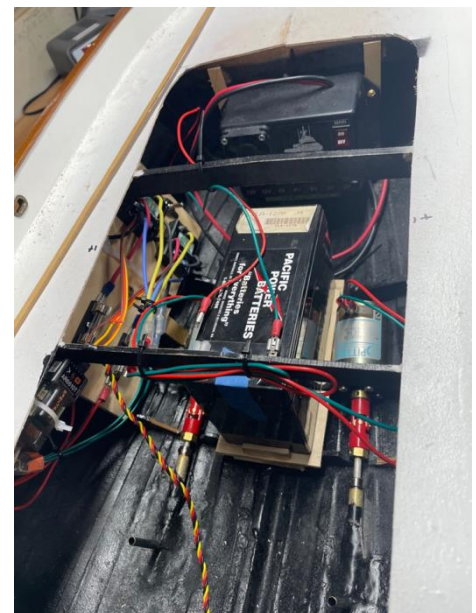
We were glad to see **Roger Lyons** out and running his Coast Guard boat.

We had many spectators who were glad to see boats on the pond again after such a long hiatus.

Update on Sunich's Model of his 1 to 1 Trawler By Steve Sunich

Well I skipped a couple months, again, but now am getting to an article and build pictures. Since that last show and tell, I have made some progress, particularly on running gear, decks and rails.

I took a sideways turn and worked on getting this boat running. I have two of the smaller Pittman motors and figured I can simplify and do direct drive since the props are smaller. Therefore, I took a weekend and mounted the motors and rigged up the speed controls and steering. See the attached picture. It runs pretty good, but I am having a slight interference problem on one motor. It has a millisecond jump once in a while and I am trying to resolve that; maybe swap out speed controls. Otherwise, it runs good in the



test tank. The Harbor Models power panel will be used for lights and stuff.

You will notice something interesting about the prop shafts. They are bare to the water. The 1:1 is like this. However, it causes a thrust block problem as there is no stuffing box for the thrust to push against. Therefore, the forward thrust is all on the struts. I built them pretty stout and it was a chore to get the short struts to allow perfect shaft alignment.



I have now started on railings and the wood decking. The railings went pretty well, but it was difficult to get them cut with the curves and curls at the bow. However, the decking is a different story. To make the correct scale, the decking is 1/8th inch wide and 3/64th inch thick cedar strips. I also wanted to try using the actual black caulking between the strips. With some experimentation, I came up with a system. The system is very time consuming, but rewarding. I glued the strips on the deck with 3/128th inch spacers between each strip. After doing one area, I then started the caulking process. That is where things become time consuming. Since I am using caulking, each space between the strips has to be taped off. That means each strip takes tape on both sides. See the picture of the taping process. This takes multiple, multiple nights to get this done. This also means that the caulking needs to cure before being able to do the next joint because the tape goes over the previous joint.



After the caulking process, it looks a little rough. However, after about 10 days of caulking cure, it can be sanded. Sanding levels out the planking and evens out the caulking and then it looks great. As you can see, this takes a lot of tape. I figure about 15 each of 18 meter rolls. See the picture of the deck after a little sanding. A little more sanding will make it just right.





Here is how she looks now.

I will hopefully get through the deck process and move on to the details. Here are some pics of the actual 1:1 showing the detail I am going to have to manage to accomplish somehow. Notice how many strips of teak go across this boat; about 70.



I am going to have to find someone to do the graphics for the name on the stern.





2021 Northwest Model Hobby Expo is now set for
Saturday, October 30th 9 AM - 6 PM & Sunday, October 31st 9 AM to 5 PM.

See their website for current information at www.nwmhe.com

Tug Regatta for 2021 – Going 25 years!

By William K. Schemerhorn

Well good news for all as the restrictions are lifting and allowing events to be had. So with that in mind, make plans to attend the 25th Pacific NW R/C Tug Regatta on Saturday, August 21st at the Downtown Park pond in Bellevue. This is a skills regatta for all types and styles of model tugs. Barge handling and Salvaging derelict vessels are the order of the day. Lots of fun to be had that day with models from all over the region coming to take the top award. We invite everyone to join in as we celebrate 25 years of this event when it started as the Foss Cup to become what it is today. More information coming soon! If you have questions, please contact Keith at Wscherm@fidalgo.net or 360-306-1165 in the evenings.

THREE IMPROMPTU FLOAT DAYS at LAKE TYE

by Fred Row

4/14/21 FLOAT: *****



It was 9:00AM and a beautiful spring day, the sun was out with calm waters, when **Mel Suelzle, Fred Row, Richard Bizier, Robert Osmond** met at Lake Tye to run their boats. Both Richard and Robert brought their sail boats and were looking for a nice breeze for them to skim across the water.



It was a little after 10:00AM when a slight breeze picked up and Robert and Richard rigged their sails and watched their boats glide effortlessly across the water. And of course, Richard graced the lake with his Noodle Boat. All enjoyed the gathering and everyone's boats ran well.



4/21/2021 FLOAT: *****



Bill Heath, Chuck Young, Richard Bizier and Fred Row met up at Lake Tye for another day of comradery as they ran their boats on the calm waters of Lake Tye under a warming spring sun. Richard had restrung his mast and sail riggings after visiting a marina to look at how “real” sailboat” riggings were done. His work paid off and his sailboat skimmed the water in all directions.



Bill brought several of his boats, including a tug and barge and skillfully maneuvered it around the lake.

Fred ran his Southhampton Tug and Cougar 1 Springer. Chuck had a great time running his red and white Springer. Bill’s wife Judy joined us as an enthusiastic spectator.



4/28/2021 FLOAT: *****



To end the month of April, six members joined together for a final impromptu third April float, minus “April Showers”. Instead of “April Showers” the sun show down across the lake and beach. Skippers participating included: **Robert Osmond, Richard Bizier, Mel Suelzle, Bill Heath, Fred Row,** and new club member **Lee Buse.** Bill’s wife Judy enjoyed watching the boats and reading in the warm sun.

Familiar boats on the water included Mel’s Foss Tug and Army Patrol Cruiser, Fred’s Christ Craft, Bill’s Warrior Tug, barge and Tug, Richard’s Tug, Chris Craft speed boat and his newly rigged Sailboat, Robert’s tug, Springer and Surfer. New member, Lee ran a Springer and of course Fred’s Cougar 1 made an appearance.



Tug, barge and Tug, Richard’s Tug, Chris Craft speed boat and his newly rigged Sailboat, Robert’s tug, Springer and Surfer. New member, Lee ran a Springer and of course Fred’s Cougar 1 made an appearance.

There were two “mishaps”. Bill’s tug and barge ventured beyond his radio’s range. Robert’s little Tug and Fred’s Cougar 1 immediately raced to assist by gently pushing the barge and tug back into radio range, where skipper Bill could again man the helm. Roberts Surfer’s battery died, but with the help of his tug he was able to guide it back



to shore.

If you are interested in participating in future small, impromptu floats let Fred, Richard, Bill or Robert know.



We do mean impromptu floats, as often there is only a day or two notice before gathering at the lake.



As we write this article, we are all looking forward to our first CLUB FLOAT at Bellevue’s Pond on Saturday, May 8th. It will be great seeing everyone in person versus the ZOOM Computer Screen!



Fishing Boats of the Northwest – Part 3

By Keith Schemerhorn

Now I have covered most of the more popular fishing boats in the first 2 parts. It was not an all inclusive list, but the most popular of the vessels. In part 3, I will cover more of the support boats or specialty boats. The most of these are the tenders.

Tenders vary in size and often work for one of the processing plants. The boats that are contracted with them will use the tenders to take the fish in when they are full or have their limits. This saves time for them and long waits back at the dock. Also allows for a quick turn around while on the fishing grounds if they are able to keep fishing.

tenders can be larger seiners, crab boats, or specialty designed like the scows. (Picture of a modern tender/crabber)



(Picturs of older "scow " style tender and some of the deck equipment)

Scows tend to be older, boxy boats built of wood in the 1920s-1950. Basically a barge with power. Most of the tenders have modern "suction pumps" that vacuum the fish out of the fish holds or the net in the water. They will have various sorting racks and weigh stations to get get the correct fish and pricing for them before being weighed in a large hopper. This makes the tenders an ideal modeling subject with all the details that one can include.

There is also a group tender that works with a "family" of fishing boats that acts like a storage/hotel/supply ship for them. They also vary in styles, but most often are vintage older wooden vessels at about 75-95 feet. Sleeping quarters and emergency supplies is their basic job--not fish hauling.

(Picture of support tender 1930's built)

Another interesting vessel are the old wooden Halibut schooners. These older (mostly built in the early 1910's) boats are unique in that both the wheel house and working deck are in the back quarter/third of the vessel. The forward area is for the fish hold and crew quarters. They fish by a means known as long lining. This is where there are several hundred hooks to a line dropped behind the boat to fish. Buoys mark the ends of each line. When retrieving the lines, they are brought back aboard over the stern where the hooks are stored and fish processed before going into the forward hatch. The nice thing about the halibut schooners is they work under a "shelter" on the stern to stay out out the cold northern waters weather. Lots of classic boat details to be found on one of these making them another good modeling subject.



(Picture of Seattle's most famous Halibut Schooner)

So that covers most of the fishing vessels of this area. There are more that are variants of all of the others, but represents the bulk of the vessels other than the big factory trawlers. Many of these would make good modeling subjects. And that is the reason for this 3 part series. Now, most of these vessels have no kits available. So that would make them great scratch build subjects. There are some kits and /or hulls out there that could be modified to represent these as well. So next month, I will share information as to where drawings can be found, kits

manufactures, and other suppliers that have what may be the starting point to a fantastic model for some one.

(To see parts one and two of "Fishing Boats of the Northwest", please see March and April newsletter issues.)



2021 NWRCSM Events Calendar

The rest of the calendar will be determined as the Year progresses and our activities can increase and return to normal. (Updated 5/14/2021)

JANUARY

7 Meeting by Zoom 7 pm

FEBRUARY

4 Meeting by Zoom 7 pm

MARCH

4 Meeting by Zoom 7 pm

APRIL

1 Meeting by Zoom 7 pm

MAY

~~1 Seattle Yacht Club's Boating Season Opener --- cancelled~~

6 Meeting by Zoom 7 pm

8 Fun Float at Bellevue Downtown Pond 9 am

JUNE

3 Meeting by Zoom 7 pm

5 Fun Float at Bellevue Downtown Pond >>And **Springer Event by Dave Green** 9 am

JULY

1 Meeting by Zoom 7 pm

10 Fun Float at Bellevue Downtown Pond 9 am (** **Not Our Usual Date** **)

17 NWRCSM's Regatta, Registration 8 to 8:45 am, running boats begins 9 AM, all day.

31 Night Float (** awaiting Park's approval **) 7 to 10 pm, Sunset 8:45 PM **After dark only boats with lights can run after dark.**

AUGUST

5 Meeting (method to be decided) 7 pm

14 Fun Float at Bellevue Downtown Pond 9 am (** **Not Our Usual Date** **)

21 Tug Boat Regatta Registration 8 to 8:45 am, running boats begins 9 AM, all day

SEPTEMBER

2 Meeting (method to be decided) 7 pm

4 Fun Float at Bellevue Downtown Pond 9 am

18 Night Float (awaiting Park's approval) 7 to 10 pm, Sunset 7:14 PM **Only boats with lights can run after dark.**

OCTOBER

7 Meeting (method to be decided) 7 pm

?? Fun Float at SYC, date to come latter 9 am

30 NW Model Hobby Expo, Monroe 9 am to 6 pm (no pond to float boats)

31 NW Model Hobby Expo, Monroe 9 am to 5 pm (no pond to float boats)
(Check their website for updates WWW.NWMHE.COM)

NOVEMBER

4 Meeting (method to be decided) 7 pm

?? Fun Float at SYC, date to come later. 9 am





DECEMBER

2 Annual Holiday Dinner Meeting at Spaghetti Factory, Lynnwood, WA

- Appetizers 6:15 PM
- Dinner at 7:00 PM

?? Fun Float at SYC, date to come later. 9 am



NWRCSM 2021 Club Officers		
	President: Robert Osmond	Webmaster: Allan Wing
	Vice President: Ron Bray	Skagit R/C Meeting Contact: Keith Schermerhorn
	Treasurer: Dave White	Newsletter Editor: Paul Williams
	Membership Database: Bryan Morse	



Currently we are having only Zoom meetings.

***When we resume in person meetings,
they will be at The Facility location.***

**The Facility – Makerspace
6606 196th Street SW
Lynnwood, WA. 98036**

