



# The Bilge Pump

The Official Log of the Northwest R/C Ship Modelers  
Seattle, Washington, USA  
[www.shipmodelers.com](http://www.shipmodelers.com)

May 2020

## Events Look Ahead

### MAY

~~7 Meeting at The Facility CANCELLED~~  
~~16 Fun Float CANCELLED~~  
~~21 Coffee Fun Float CANCELLED~~

### June

~~4 Meeting at The Facility CANCELLED~~  
~~6 NWRG Regatta - NEW Date Sept 12th~~  
~~18 Coffee Fun Float-Bellevue Park 11 am-1pm~~

### July

~~9 Meeting at The Facility CANCELLED~~  
11 Fun Float - Bellevue Park 9 am  
16 Coffee Fun Float - Bellevue 11am -1pm  
31 Twilight Fun Float - Bellevue 7 pm

### August

6 Meeting at The Facility 7 pm  
8 Fun Float/Bellevue Downtown Pond 9 am  
8 Portland Regatta - Tualatin, OR 9 - 4  
15 NW Tug Regatta Bellevue Pond 9 - 4  
16 BAMM Regatta - Burnaby B.C.

More events information and updates on calendar page latter in newsletter and, **Check our website for latest updates at [www.shipmodelers.com](http://www.shipmodelers.com)**



Read about other members projects below.

## From the Wheelhouse

Mel Suelzle

This month we continue to move forward with a sharp eye on what makes sense and keeps us safe from the Covid-19 virus. As light starts to show at the end of the tunnel, there are still events that could derail or delay our arrival at the tunnel's end. This past week the 4 phase plan from Olympia was released. Some outdoor recreational events are being allowed, but limited to specific activities that include "boating". Perhaps that could be interpreted as model boating that we could use lakes for our boating activities in small groups that observe social distancing practices. While some parks are opening in King County, Bellevue Parks Department has stated they will be closed at least until May 31<sup>st</sup>. Dave Green is in frequent contact with them and will advise us when they will issue a permit for our activities.



Recently we received notice that the 2020 Fishermen's Fall Festival has been cancelled.

So other than ad hoc member visits to lakes open for "boating" we have no formal event plans through May 31<sup>st</sup>. We still hold out for a fun float with social distancing rules for our June 6<sup>th</sup> fun float. While we can self-impose distancing among ourselves, keeping the other park visitors away may require some measures to block their access to our areas. I will continue to watch for revisions to the Governor's Phases that might affect our schedule. Of course our plans can change as official guidelines

and mandates are subject to frequent change. Please check your email regularly for any updates.



Recently I have been using Zoom to maintain contact with my family and conduct other meetings. I am very impressed by this tool and feel it is a great substitute for keeping up with one another and managing club business. The weekly coffee meetings and monthly club meetings were nice social events, but also help make decisions about our club. As we prepare for the Regatta, it will be necessary to meet before the restrictions are lifted. Zoom would be a great substitute. Anyone can participate if they have a computer with a camera or a smart phone. I would appreciate a short email from anyone who is interested in using this tool for some informal meetings.



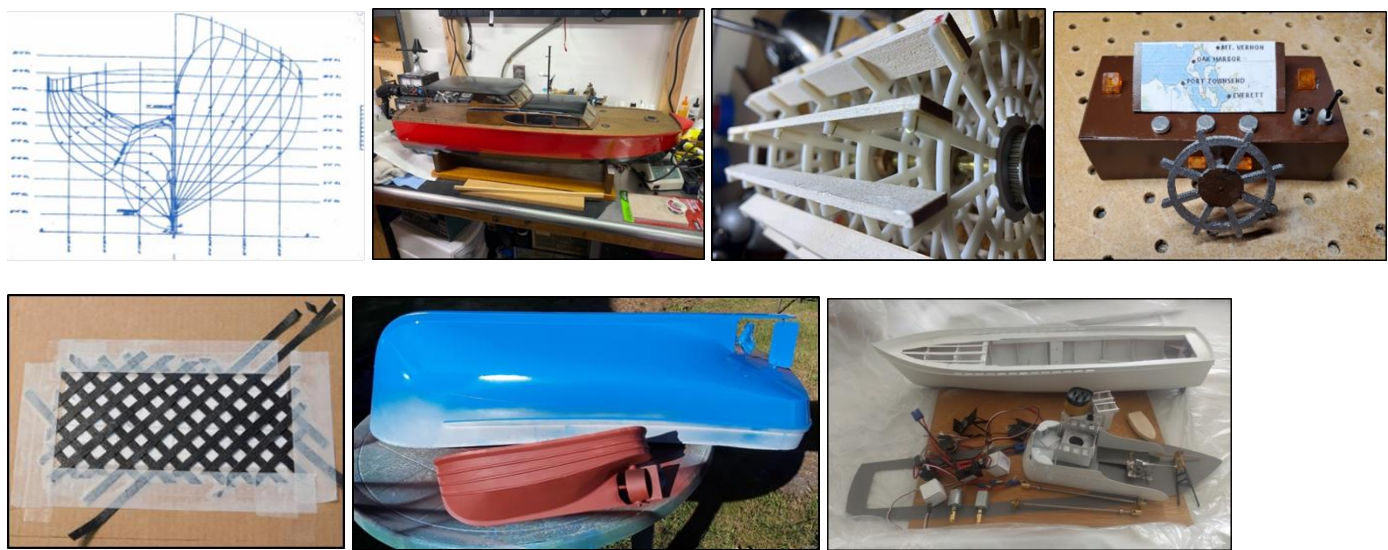
And finally, I really appreciate the great response to newsletter articles about member projects and activities. These are a great for our newsletters that would be very sparse and very boring without any events. Even after the virus subsides, they also give members a way to communicate their plans when they are unable to attend a meeting. Please keep it going. It's great to see all the activity going on.

Sooo, keep on building and refitting those boats as fun floats are on the horizon. I greatly look forward to seeing you all again and seeing the results of your work performing on the water.

*Mel Suelzle*



Below are ten pages of projects that club members are telling us about.

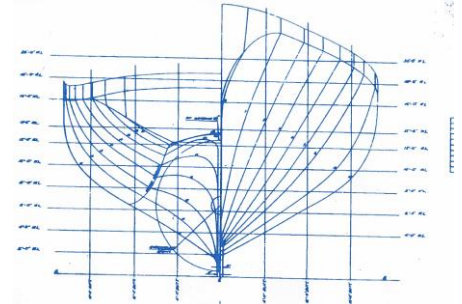


## Boat Building News from Members:

### Steve Sunich's Dry Dock News – The YTB Build

After finishing the tugs, Andrew Foss and Stalwart, I was thinking of a Navy tug. Scouring through plans on the internet, I discovered YTB's. Go figure, YTB stands for Large Harbor Tug. After a little searching for photos, I found that there were still YTB's in Bremerton. Most are 70's vintage with the traditional tugboat look. The Canonchet photos were available, also in dry-dock in Port Townsend, so off I went on a new project. The thing is that this project started in June of 2017. Now that I have made some progress I thought I would share some build photos and some narrative for the newsletter.

Like I said, I found some plans, for something like \$15. They are barely legible but I managed to get some dimensions so that I could at least get a scale reference for the rest of the drawings. I scanned the plans and experimented on my large format printer to get the right scale. If you know me; I wanted a little bigger boat. Full scale she is about 110 feet long, so to get to a 41" model length, I chose a 1/32 scale. Her prop is about 10' diameter so I threw on about a 3-3/4" wheel. From the plans I was able to trace some frames and install them on about 4" centers, lay a keel, and get going.



I originally wanted to plank the hull with plywood but soon discovered that there were so many weird, compound curves that it was not totally possible. So as can be seen some is plywood and some is narrow strips of plywood that bent better in different directions. Even though these strips had spaces between them, fiberglass was easy to apply. After multiple layers of fiberglass and a ton, and I mean a ton, of sanding, I had a basic hull.



After I completed the hull the deck was added. Note that some frames were made from 1/4" plywood to make things a little more stout.

Next a cabin was built (plans were far from accurate), bulwarks added and running gear was installed. All of the wood surfaces are also fiber glassed. There was a lot of painting, sanding and painting again to get to the point of being able to move on with more detail.





I have installed the running gear and had her on the water, at fun floats, a few times. She is hardly finished, but at least runs. For me, this is a small boat. Since it is a single screw with narrow hull, she weighs in at only about 22 pounds. Right now she has just a temporary motor but, as you know with me, a big 'ole 12 volt Pitman will be the perfect final power. Since this is a smaller boat I was not able to jam a big battery inside. One relatively small 12 volt battery will have to suffice. She still needs some lead ballast to keep floating at the right point.

The color was difficult to determine and also find the best solution. The grey color is a semi-gloss Tamiya paint. The black is a flat black with a semi-gloss overcoat.

This boat will have rubber fenders all the way down the bow stem. This is because it pushes submarines around. With the subs' round hull, mostly under water, the tugs push very low on the bow stem. I did find some rubber that is a half round that I can string wire or chain through. I have not figured out how to attach the ends to the hull yet but I am working on that problem. Another interesting feature on these tugs is the rollers on the cabin. These look to be rollers that would push on the curved hull of aircraft carriers.



I figure this build might be 70% complete and I hope to have her at the show in September. But, between working, fly fishing, full scale boat maintenance, yard work, and a vintage Corvette it is tough to find time to get it finished.

Hopefully, this will be a good substitute for a meeting show and tell.

Steve Sunich

### Tom Edwards -- Resurrected Chris Craft Cruiser

Hi Everyone. First off I must say I sure miss meetings and boating with everyone.

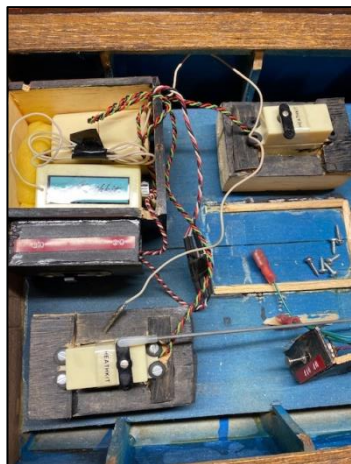
Well this is a 55 year old wood boat that I found in a shop called “Nasty Jacks” in La Connor, WA, while on a day out with my wife. He was asking \$250, but it being in bad shape, I offered \$100, and bought it. (My wife just rolled her eyes). It was in poor shape. It had mail box decals on it that said “Round Table-Oakland”.

Next, I completely took it apart down to the hull. I restored the hull, rebuilt the inner hull structure and painted it.

Then I had to sand the entire decking to get the ugly coat off. I refinished the decking in new stain and repaired it. The deck was fitted horrible so I had to do a lot of work to get it to fit level and look good. I installed new windows, painted the cabin and tops. I made new railings for it. And did a bunch of hand painting on details. This is how it is so far. I look forward to running it with everyone.



(Tom also remodeled the Heathkit transmitter by replacing the old electronics with new electronics so it is now ready for the 2020 season.)



Tom E.

## David Zanzig -- Sternwheeler Model of Creole Queen/Klondike

As many of you have noticed by the models I bring to things, I enjoy the unusual examples, as well as boats that have had some meaning to me personally.

- The Elsie M is a boat I operated in the “80’s”.
- The Carol E, named for my wife, is a boat I saw in my professional work.
- The USCG 44 foot MLB was the model I bought the day I got out of boot camp in “75” (for younger members, that is year 1975).

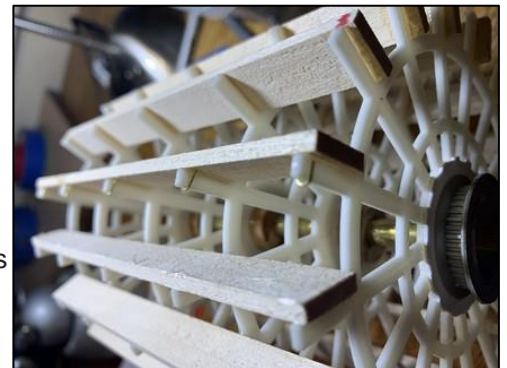
In keeping with unusual boats I build, I obtained a kit of the Creole Queen (CQ) sternwheeler, mostly for the sternwheel aspect. Shortly after getting the kit, my wife and I took a trip to Alaska. Driving thru Whitehorse YT, Canada, we stopped and visited a Yukon River steamboat the “SS Klondike”, on the hard there. I decided I was going to convert the sternwheeler to become similar to it.

I cannot do rivet counting as well as many of you, so it will resemble, but not be a copy of the original.



I started building the hull, but reading about the CQ, found she rode really low in the water. I chose to add a half inch of depth to the hull. It caused no ends of difficulties, bolt with the frame and with the skin. I finally got it, and with the exception of the bow stem, it came out all right.

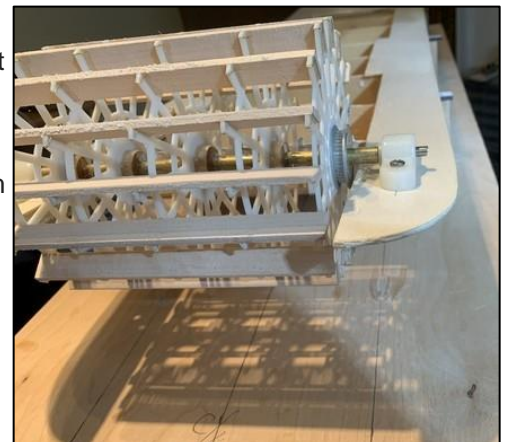
Lately, I've been working on the wheel. My son 3D printed a new wheel frames, but the limitations of the plastic requires certain adaptations to be used. Adhesives have difficulties, so when I attached the feathers, I felt a mechanical holder was in order. It also helps the looks, by adding what appears to be the bolt plates.



I will be using a cog belt drive system instead of the rubber band like system the kit provided. I need to order new belts, as the first ones I got are about twice as long as I need.

So, the wheel fits, and goes around. I have a long ways to go, but the basic system is now there.

David Z.



### Bill Heath – Tales from the Pond

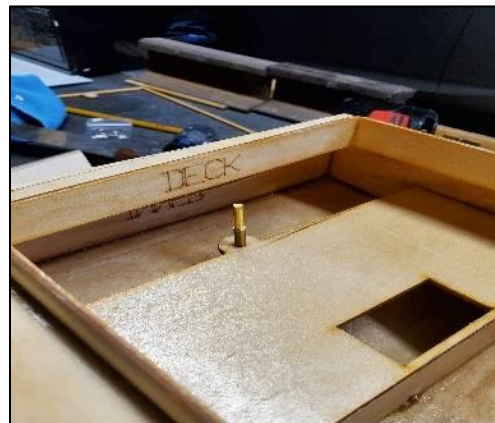
Tue, May 5, 8:12 AM

“Bill shows off his nicely remake of his push boat that previously was built and owned by Gordy Canney.”



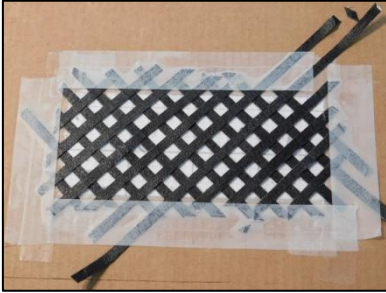
### Fred Row -- The Birth of a New Springer:

I continue to make progress on my Springer, my first scratch built model. The wheelhouse control panel build and also tested the fit of the shaft, motor and rudder. I have the first coat of paint on.



## From Keith Schermerhorn's Dry Dock -- Making Wooden Life Floats

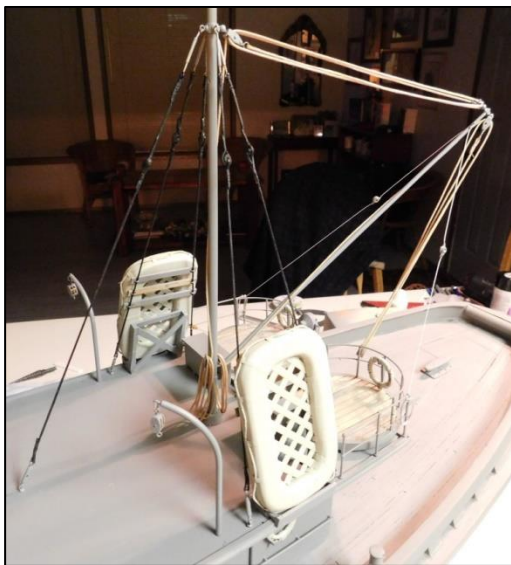
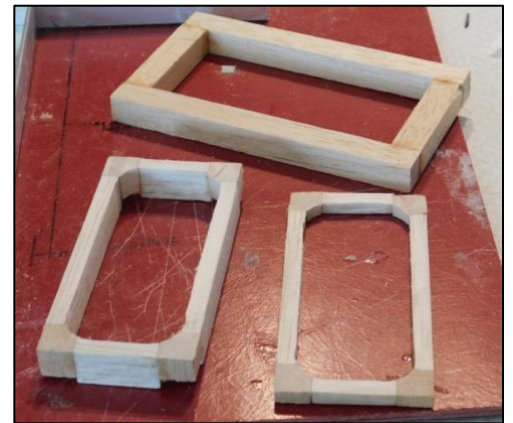
On my US Army Tug LT157 build, there are a couple of life rafts needed, which I made from balsa and are the same material the real one's were made out of. Now looking at them the basic shape was easy to figure out. On mine the basic rectangular shape would be made out of balsa strips 3/8" blocks.



The trick was how to make the weave in the middle and attaching it. First solution was to make the netting weave that goes in the middle out of masking tape. This would require taking a length of tape, folding sticky side to sticky side, then cutting into workable strips. Once I had enough strips, I made a "jig" or pattern on paper (covered with parchment paper) to help layout the strips. To hold them in place while all strips went down I use double sided tape. Each piece then received a shot of CA glue at each junction to hold it all together.



Then it was back to the raft shaping. There were 2 box parts made for the shape. The outer ring was solid and shaped accordingly with the belt sander and finished by hand. Then an inner box was made to fit inside of the outer one. This one would be split down the middle using the Dremel and diamond cutter blade. The bottom half of the second box was glued to the outer box. The top piece was then glued onto one of the lattice weaves with CA. Trimmed out to the edges of the "box" and then glued to the other half of the raft assembly with netting side down into the middle. Sanded all to fit, filled gaps, sealed with sanding sealer, and then primer.



The details added next included adding the life lines along the sides. Line was held in place by using pin stripping tape wrapped around the raft and line with the line "loosely" hanging. Once all done, the rafts received their final paint. Now I have life rafts that are appropriate for this build.

Keith S.



**FROM THE WORKSHOP OF KEITH SCHERMERHORN**

Well, here are a few of the projects I am working on all at once! Doing the "dirty" work while it is nice out and getting multiple projects worked on now that the LT157 is basically done. This includes the Titan class tug, fish troller, log tug, river tug, and the crab boat.



**Helpful Modelers Hint from Keith**

Doing putty or mixing epoxy gets to be a mess and a pain to clean up. I use a pallet made from a fiberglass sheet to mix things on. To make it easier to clean up, I wrap it in thick clear packing tape strips in multiple layers. As you use up one "dirty" a section, all you have to do is remove the tape with the left over or messy gunk and you are good to do more work on a clean slate.

Keith S.

## FROM DAVE GREENS WORKSHOP



With all the time on our hands it has been an opportunity for walking, jigsaw puzzles, cribbage, drives to nowhere in particular and back, and lots of model ship stuff. It seems like there is always a lot of little things to fix on the existing fleet which I took care of but best of all I could make some steady progress on both the Dumas Kit GEO Washburn and scratch Coast Guard 95 foot patrol boat.

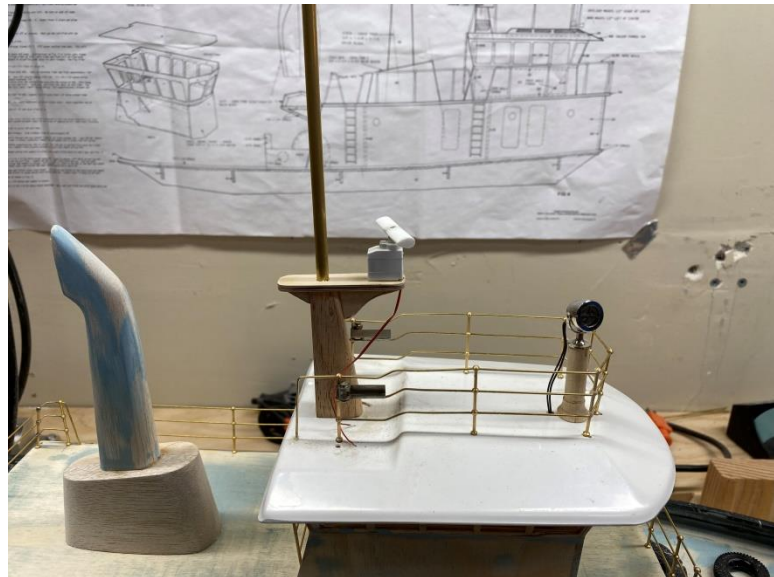
In fact the Washburn is basically 100%, including bathtub tests. The first test was a failure as I thought it was going to jump out the tub and fly away with the throttle barely cracked even though I used the specified drive train except included a 3:1 reduction instead of straight through (straight drive had not looked right to me from the start). So I re-powered using a 4:1 reduction and a motor I had salvaged from my first battery powered drill, it was 6 pole so much better speed control. I also reduced voltage from 7.2 to 6. Performance in the tub looked tolerable but that rig was a screamer which I didn't like. So back to the motor box where I found a can motor with electric plug blades on either side of the shaft. The RPM and torque looked good so now there is a nice quiet straight through drive that works nicely with 7.2 volts.



For the 95 foot patrol boat it is principally an assembly project. It is very weight sensitive so several pieces were scrapped and redone to save ounces.

David G.

From Steve Gillman's work on his Shelly Foss:



Steve G.

**From Jerry Julian's Bench** comes some pictures of a UW Research model he is finishing. The boat was rebuilt from an old fish boat model. Scratch built and Jerry's idea of a small research model.



Another addition to Jerry's fleet is the Pioneer fishing boat model still being worked on. It started as a Ron Burchett hull with the rest scratch built. He just finished a Kort nozzle for it.



Jerry G.

**2020 NWRCSM Events Calendar (5/5/2020)****JANUARY**

2	Meeting at The Facility*	7 pm
4	Fun Float at Seattle Yacht Club	9 am
25/26	NW Hobby Expo Monroe	9am-6pm

**FEBRUARY**

6	Meeting at The Facility*	7 pm
8	Fun Float at Seattle Yacht Club	9 am

**MARCH**

5	Meeting at The Facility*	7 pm
7	Fun Float at Seattle Yacht Club	9 am

**APRIL**

<del>2</del>	<del>Meeting at The Facility*</del>	<del>CANCELLED</del>
<del>4</del>	<del>Fun Float - Bellevue Pond</del>	<del>CANCELLED</del>
	<del>Springer Model Event</del>	<del>CANCELLED</del>
<del>29</del>	<del>Seattle Yacht Club Fun Float</del>	

**MAY**

<del>7</del>	<del>Meeting at The Facility*</del>	
<del>16</del>	<del>Fun Float - Bellevue Downtown Park</del>	
<del>21</del>	<del>Coffee Fun Float - Bellevue Park</del>	

**JUNE**

<del>4</del>	<del>Meeting at The Facility*</del>	<del>7 PM</del>
<del>6</del>	<del>NW RC Regatta - Bellevue Pond</del>	<b>RESCHEDULED TO 9/12/2020</b>
<b>6</b>	Fun Float - Bellevue Downtown Park	9 am
18	Coffee Fun Float - Bellevue Park	<b>10 am -12 pm</b>

**JULY**

<del>9</del>	<del>Meeting at The Facility*</del>	<del>7 pm</del>
11	Fun Float - Bellevue Downtown Park	9 am
16	Coffee Fun Float - Bellevue Pond	<b>10 am -1 pm</b>
31	Twilight Fun Float - Bellevue Pond	7pm

**AUGUST**

6	Meeting at The Facility*	7 pm
8	Fun Float – Bellevue Downtown Pond	9 am
8	Portland Regatta – Tualatin, OR	9 am – 4 pm
15	Northwest Tug Regatta Bellevue Pond	9 am – 4 pm
16	BAMM Regatta - Burnaby B.C.	

**SEPTEMBER**

3	Meeting at The Facility*	7 pm
5	Fun Float – Bellevue Downtown Park	9 am
12	NW RC Regatta Bellevue Pond	9 am - 4pm
<del>26</del>	<del>Fishermen's Memorial – Ballard</del>	<del>11am – 6 pm</del>

**The Facility**

Our meeting location is part of the Everett Community College buildings (Monroe Hall) located at:

6606 196<sup>th</sup> Street SW.  
Lynnwood, WA. 98036

More information on this facility can be found at <https://facilitymade.com/>

**CANCELLED****OCTOBER**

1	Meeting at The Facility*	7 pm
3	Fun Float - Bellevue Downtown Park	9 am
	Springer Model Event	10am





**NOVEMBER**

5	Meeting at The Facility*	7 pm
7	Fun Float - Seattle Yacht Club	9 am

**DECEMBER**

3	Christmas Dinner	
	Old Spaghetti Factory - Lynnwood	6:30 – 9 pm



<b>2020 Club Officers</b>		
	<b>President: Mel Suelzle</b>	<b>Webmaster: Allan Wing</b>
	<b>Vice President: Ron Bray</b>	<b>Skagit R/C Meeting Contact: Keith Schermerhorn</b>
	<b>Treasurer: Dave White</b>	<b>Newsletter Editor: Paul Williams</b>
	<b>Membership Database: Bryan Morse</b>	

## ***Club Meeting Location***

The Facility – Makerspace

6606 196<sup>th</sup> Street SW  
Lynnwood, WA. 98036