



The Bilge Pump

The Official Log of the Northwest R/C Ship Modelers
Seattle, Washington, USA
www.shipmodelers.com

April 2020

Events Look Ahead

April
29 Seattle Yacht Club **CANCELLED**

MAY
7 Meeting at The Facility **CANCELLED**
16 Fun Float **CANCELLED**
21 Coffee Fun Float **CANCELLED**

June
4 Meeting at The Facility 7 pm
X NWRC Regatta – **NEW Date Sept 12th**
18 Coffee Fun Float-Bellevue Park 11 am-1pm

July
9 Meeting at The Facility 7 pm
11 Fun Float - Bellevue Park 9 am
16 Coffee Fun Float – Bellevue 11am -1pm
31 Twilight Fun Float - Bellevue 7 pm

More events information on calendar page latter in newsletter and, **Check our website for latest updates at www.shipmodelers.com**



From the Wheelhouse

Mel Suelzle

Normally, this time of the year is a time for planning and preparing our models for a full season of model boating events. But few things are normal these days. Promises from officials are dire, indeed, and do little to ease our minds and help us deal with the isolation they encourage. But as a social organization it is most important that we try and encourage more “normalcy” from a viewpoint of isolated distant contact.



Usually our newsletters focus on positive happens during our meetings and modeling activities. However, it is time for us to seek other ways to stay in “contact” using technology like email, Facebook and phone calls. This issue of the Bilge Pump is the first that is trying to replace our scheduled activities with more positive things we are during that are of interest to our members. We all get enough negative news, so let’s keep our activity reports positive whenever we can.

However, here are the latest decisions regarding our club activities:

- **All meetings and scheduled items are cancelled for April & May.** This includes our all day fun float at the Seattle Yacht Club on April 29th. Steve Sunich reports that the SYC has cancelled all Opening Day Activities in compliance to the Governor’s mandate for isolation.
- **Our regatta has been moved to September 12th.** Dave Green has received confirmation of our reservations for this new date. This date is set as the latest date we could hold the regatta with a reasonably good chance for decent weather.

Of course our plans can change as official guidelines and mandates are subject to frequent change. Please check your email regularly for any updates.

So in these crazy times, with the absence of personal contacts, members are advised to keep close tabs on their emails. We will watch for the latest information and the mandated actions relative to the virus that might affect our new schedule. Stay tuned for more late breaking developments. I will keep you up to date with changes as they occur that will affect our club events.



Robert Osmond has reported that long time club member **Ed Maurer** passed away on Saturday April 1st at Providence Hospital in Everett. Robert says he went peacefully and was sitting up and smiling only a few days earlier.

Ed was an active member of our club since 2000 and served as our membership chair and our Treasurer from 2005 thru 2016. Ed also served as our regatta score keeper and on those sunny days he spent all day under a hood to enable him to view his laptop screen in the bright sun. He always attended our meetings and coffee gatherings at Galaxy Hobby.

Ed lived in Mountlake Terrace for many years and moved to the Brookdale Harbor Place assisted living facility in Everett for the last year or so. Ed is survived by his two his two sons, that live in the Puget Sound area.

Bob Jacobsen checks in from Idaho and gives us a heads up on some new ready to run boats coming to the market. Motion RC Company is going to import a scale boat line. The products will carry the Bancroft brand but we will recognize of the boats from Aquacraft and others. They have some models like Yamato and a really nice Island Class CG Cutter. Also the line includes a 1/16 scale landing craft that is likely destined to carry Bob's 1/16 Tamiya Sherman Tank. Hopefully we will see some photos or videos of that combination in operation, or maybe a live demo at the Bellevue pond. Here is a link to get a preview of these new products.

<https://www.motionrc.com/collections/all-rc-boats>

Boat Building News from Members:

Fred Row is keeping busy during the Stay at Home Order!

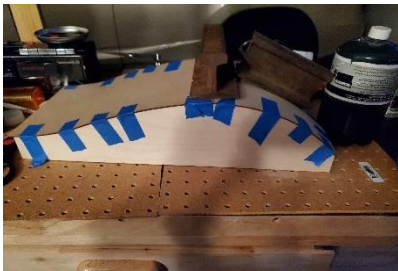
As I begin this article, I trust everyone is staying safe, healthy and holding up at home. It is giving us all time to make progress on those put off projects. If you remember the article about the First 2020 Fun Float on January 4, 2020 at the Seattle Yacht club you read about when I was taking my Southampton out of the water, the boat



slipped out of the sling, dropped to the water, stern first, and began to immediately sink. I lunged down to retrieve the boat before sinking out of reach. In my lunge and grab, the light mast, rotating radar antenna, ladder and sections of railing snapped off and began to sink. The stay at home order has given me time to work on repairing the Southampton. The ladder, radar, railing and ladder have been reattached with just slight modifications. A new receiver is on order and hopefully, it should be up and running for our next float. Thank you again Robert for helping me retrieve many of the pieces before they sank to the bottom!



As to another project, a "Cougar Springer" is in the Making! Staying at home has also given me the opportunity to work on building my first model boat. After a number of days working in the garage, my springer is together with final sanding of each part underway, before painting and adding internal components. Attached are pictures of my progress. The next steps will be doing the interior of the wheelhouse, including a Puget Sound Nautical chart, cabinetry, radar, etc. It has been a great learning experience and sending pictures to Richard of progress has allowed him to give me suggestions as to the next steps.



My plans are to paint it crimson and gray with a Cougar logo. I'm still working on the name! Any suggestions?

Fred

From Keith Schermerhorn



Here is my current project, the US Army tug LT157, a Miki Miki Class tug that was built at Northwestern Shipyard in Bellingham back in WW2. This started as a Gary King semi kit that I won at the 2014 regatta. It is a fiberglass hull and deck with the basic house made from laser cut plywood. The rest of the boat has been modified with a lot of scratch built parts.

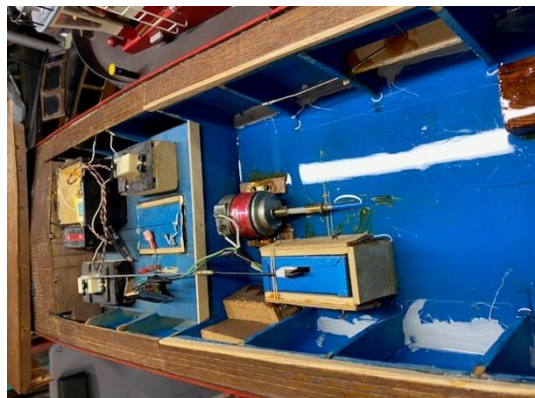
The interior of the pilot house is detailed and the boat is equipped with lights. Like a few other boats I have built, this one has some fun rigging that was implemented and made to function like the real vessel with turnbuckles and tied ends with eyelets. This combo made it easier to put tension on the lines without stretching them. Winch and capstan are made from Sintra, plastic, brass, and some

wood. Life rafts were made of balsa like the real ones with the netting being of strips of masking tape sandwiched in-between. Mast are made from old fishing poles as they are tapered and hollow—great for hiding some wires for lights. Still work in progress, but will be ready for regatta season this year!



From Tom Edwards

Mel talked with Tom and wrote -- "Tom Edwards has been expanding his fleet through acquisition. He recently picked up a 50 year old "Heath Kit" boat and controller. He purchased it at a little nic'nac tourist store. The store owner acquired it somehow and had it sitting for sale, but no one wanted it. Tom made an offer and purchased it. He will send photos when it's restored next month."



Tom's neighbor was going to buy the Gordy Canney's Shelly Foss but he said it was too big. He wanted a smaller tug. Tom gave him an awesome deal on one of his small tugs and he purchased the Shelly Foss because he really liked it. Tom misses the meetings and boating events with everyone and looks forward to meetings again. He hopes everyone stays safe and healthy". -- Mel



Tom Edwards wrote -- Well I mentioned that I wanted to build a boat to pull behind my truck Springer. This is it. I also built the trailer. That was interesting. The boat sits in the water very well with the trailer attached. It looks good hooked up too. As for the log barge, I made that for my neighbor who bought one of my tugs. He says he has always wanted a tug, so he can practice pushing the barge. He may be joining our club.



From the Olympia comes a report of two Jerry Julian's current projects.

First project -- It is an Army ST 900 tug stationed in Tacoma. It is scratch built and with little information available from the builders, I had to draw up my own plans. It is about 90% complete at the present time. More detail on the project can be found at: <https://www.rcgroups.com/forums/showthread.php?3448879-ST-900-Army-tug-build/page10> .



Second project -- Thanks to Jerry Julian for the information on one of his current projects. Like all of Jerry's models, they are crisp, beautiful, accurate models. The build site for this model can be found at the link <https://www.rcgroups.com/forums/showthread.php?3288145-Pushboat-Tug-build>

Jerry made the hull pattern and fiberglass molds. The model is a Corp of Engineers push boat and is scratch built.



From Bill Heath –

Bill is keeping his dream alive by running his boats on his private pond. And in the process he turns many of us GREEN with envy! He sent a picture!



Masaaki Seki reports on his progress building his submarine

I laid two layers of fiberglass strips about 1" wide on the inside joint of two hull halves. It took some finagling to stick fiberglass strips on the underside of the front and back decks. Using a screwdriver, putty knife, spatula, tweezers, flashlight, inspection mirror, etc., I managed to reinforce the inside of the hull from bow to stern.



Next, I used a cutoff wheel on a rotary tool to remove most of the narrow edges of the two halves (on which I had lots of clamps and paper clips at the last meeting), and used 80 grit sand paper to sand the remaining edges to be flush with the hull.

For puttying, I used "Mr. Dissolved Putty". I got this putty for my airplane models (from Hobbytown, Everett). As its name indicates, it has the consistency of thick paint and spreads easily. If you add extra thinner, it pours into narrow joints. It is waterproof and stands up to wet sanding.

For sanding, I used #400 Magic yasuri (sandpaper) made by Sujiborido of Japan. It is a wet-dry sandpaper strip, about 3/4" by 3", and attaches to a similar sized holder by hook and loop method. The holder is stiff, so it came in handy for sanding the puttied seam along the length of the hull. I got this from Galaxy just before it closed. Now you can order a whole assortment of Magic yasuri of

various grades and color-matched holders from <http://www.hlj.com>.

Well, that's about it. I hope monthly meetings will resume maybe by May and for sure by June.

Masaaki.



From Steve Thompson

Bored can't find anything to do? Steven Thompson has an idea for you! Take a few minutes and see how one modeler fills his days, month or decades. Materials are dirt cheap, but the buildings to store them are something else. Check it out; you will be glad you did!



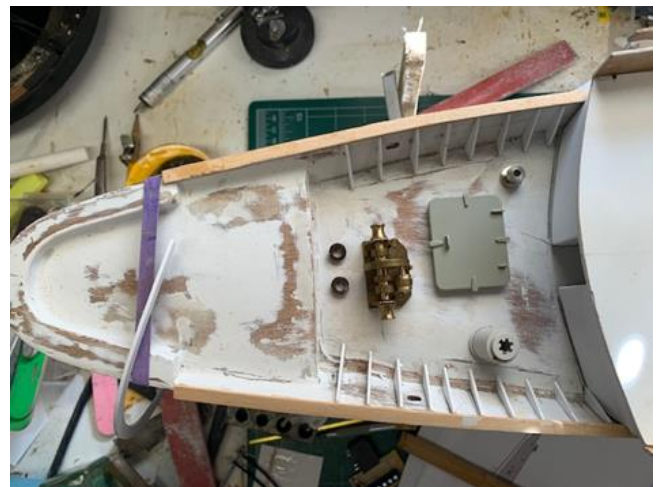
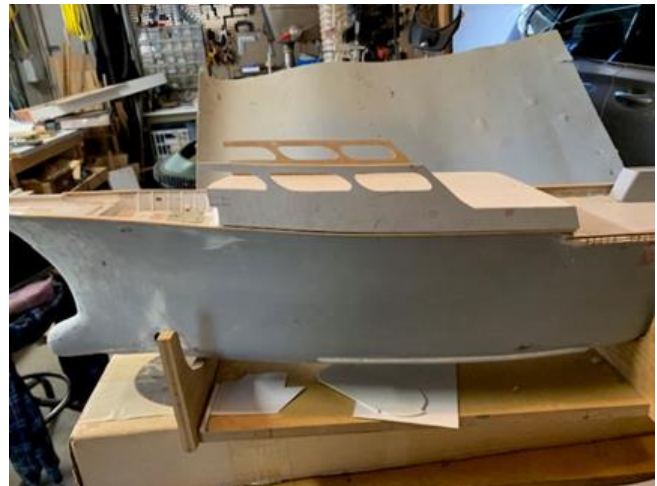
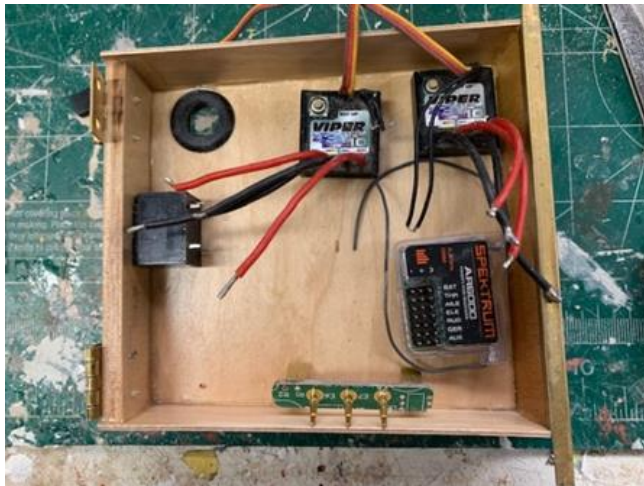
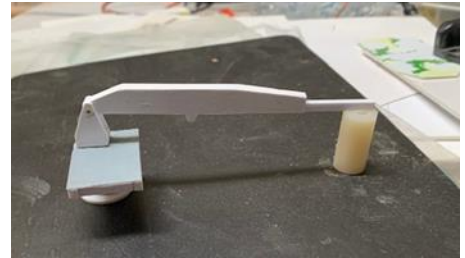
YouTube: <https://www.youtube.com/embed/HyuE1XnYO0I>

Website: <https://www.matchstickmarvels.com/>

My Activity Report for March - Mel Suelzle

Given all the spare time the “say at home” guidelines, I have managed to get some model building time in. My recent hull acquired from Doug Wilson has been a great source of filling the hours. Since show n tell at the March meeting, I have continued to readying the hull for paint. However shopping restrictions and colder weather has not been favorable for painting outdoors. Further, many of the hobby suppliers are closed so I have had to jump around as my shop supplies allow. I did get a general hobby supply replenishment from Hobby Inc. located in Georgia who was still operational.

However I have managed to keep busy with building the cabin structure, laying out the electrical compartment and working on some of the deck items like the bow crane, anchor winches and the side roller on stern port side. I decided to add this feature as part of my modernization of this 1960s tuna purse seiner. Like everyone, I am patiently (?) waiting for the restrictions to subside so I can get the initial water run to verify the running gear works as expected. The nearby community duck pond is getting more and more attractive.



2020 Northwest R/C Ship Modelers Events Calendar (4/6/2020)

JANUARY

2	Meeting at The Facility*	7 pm
4	Fun Float at Seattle Yacht Club	9 am
25/26	NW Hobby Expo - Monroe	9am-6pm

FEBRUARY

6	Meeting at The Facility*	7 pm
8	Fun Float at Seattle Yacht Club	9 am

MARCH

5	Meeting at The Facility*	7 pm
7	Fun Float at Seattle Yacht Club	9 am

APRIL

2	Meeting at The Facility	CANCELLED
4	Fun Float - Bellevue Pond	CANCELLED
	Springer Model Event	CANCELLED
29	Seattle Yacht Club Fun Float	CANCELLED

MAY

7	Meeting at The Facility	CANCELLED
16	Fun Float - Bellevue Downtown Park	CANCELLED
21	Coffee Fun Float - Bellevue Park	CANCELLED

JUNE

4	Meeting at The Facility	7 pm
18	Coffee Fun Float - Bellevue Park	11 am -1 pm

JULY

9	Meeting at The Facility	7 pm
11	Fun Float - Bellevue Downtown Park	9 am
16	Coffee Fun Float - Bellevue Pond	11 am -1 pm
31	Twilight Fun Float - Bellevue Pond	7pm

AUGUST

6	Meeting at The Facility	7 pm
8	Fun Float - Bellevue Downtown Pond	9 am
8	Portland Regatta - Tualatin, OR	9 am - 4 pm
15	Northwest Tug Regatta Bellevue Pond	9 am - 4 pm
16	BAMM's Regatta - Burnaby B.C.	??

SEPTEMBER

3	Meeting at The Facility	7 pm
5	Fun Float - Bellevue Downtown Park	9 am
12	Northwest Model Boat Regatta at Bellevue Pond	9 am - 3 pm ← New date for our regatta !!!!!!!!!!!
12	Lake Tapps Barbeque	10am - 3pm
26	Fishermen's Memorial - Ballard	11am - 6 pm

OCTOBER

1	Meeting at The Facility	7 pm
3	Fun Float - Bellevue Downtown Park Springer Model Event	9 am 10am

NOVEMBER

5	Meeting at The Facility	7 pm
7	Fun Float - Seattle Yacht Club	9 am

DECEMBER

3	Christmas Dinner Old Spaghetti Factory - Lynnwood	6:30 - 9 pm
---	--	-------------





The Facility

Our meeting location is part of the Everett Community College buildings (Monroe Hall) located at: 6606 196th Street SW.

More information on this facility can be found at

<https://facilitymade.com/>

Check our website for latest calendar updates at www.shipmodelers.com

2020 Club Officers		
	President: Mel Suelzle	Webmaster: Allan Wing
	Vice President: Ron Bray	Skagit R/C Meeting Contact: Keith Schermerhorn
	Treasurer: Dave White	Newsletter Editor: Paul Williams
	Membership Database: Bryan Morse	

Club Meeting Location

The Facility – Makerspace at 7 PM

6606 196th Street SW